

INVERTER

GREE
AIR CONDITIONER

Gree Free Match Multi Split System



Find out more at www.greeac.com.au

6 **GREE**
YEAR
WARRANTY

Gree Free Match Multi Split System



Why Choose a Gree Free Match System?

The Gree Free Match System provides the flexibility of heating or cooling your entire home or office with up to five indoor units with just one outdoor unit. This means less noise and less space taken up by large outdoor units all powering multiple indoor units. The indoor units can be different types and/or capacities which means you can customise your heating and cooling needs specifically for your home or office.

For example you can choose a 5kW Floor Console for your lounge, a 2.5kW Lomo Hi Wall for your master bedroom and a 3.5 kW Cassette for your kitchen and they can all be run from one outdoor unit.

This allows you complete temperature control over your entire home or office environment which gives increased comfort and greater energy efficiency.

All Gree Air Conditioners are fitted with Gree's G10 Inverter Technology.

Inverter air conditioners are more powerful and more energy efficient than fixed speed air conditioners. Gree G10 Inverter's use highly sensitive signal processors to vary the speed of the air conditioner to match the temperature required. When the desired temperature is achieved, the G10 Inverter technology ensures it's continually maintained with minimal noise.

What Are The Benefits of the G10 Inverter Technology?

Greater Power Savings

The G10 Inverter can save approximately 20% more power year on year compared to a fixed speed air conditioner. In addition to this, Gree Air Conditioners use less than 1W of power in standby mode.

Low Noise

The Gree 180° Sine Wave DC Speed Varying Technology offers precise control giving continuous operation and accurate temperature stability. By operating over a wider frequency the compressor is less stressed giving superior reliability while offering lower noise levels.

Increased Comfort

The superior control of the G10 Inverter means that even in extreme outdoor temperatures, the air conditioner will maintain the set temperature within $\pm 0.5^{\circ}\text{C}$.

Controlling the Gree Free Match System

Each indoor unit has its own controller, this means you can perfectly customise the temperature in each room without affecting the other rooms. Hi Wall units have remote controls and the Cassette and Ducted have wall mounted controllers.

Factory WiFi

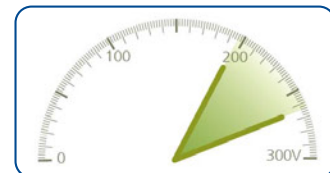
Wireless Remote Control

With built-in WiFi, you can control your Lomo Hi Wall or Floor Console Unit from your mobile phone or tablet.

Information for Installers

Wide Voltage Range Operation

The Gree Free Match System can operate safely within 198V and 264V which means that voltage variations are less likely to cause damage.



Auto Restart

The indoor units will automatically restart with the same mode and fan settings after a power outage.

Outdoor Units

	Model	Unit	GWHD(18)NK3JO	GWHD(28)NK3JO	GWHD(42)NK3JO
Power Supply	Phase/Voltage/Frequency	Ph/V/Hz	1/220-240/50	1/220-240/50	1/220-240/50
	Power Supply Mode	-	Outdoor		
Capacity	Cooling	kW	5.00 (2.05-6.20)	8.00 (2.20-10.00)	12.00 (2.60-12.00)
	Heating	kW	5.60 (2.50-6.65)	9.30 (2.80-11.00)	12.00 (3.00-13.50)
Power input	Cooling	kW	1.55 (0.68-2.70)	2.48 (0.65-4.55)	3.55 (1.00-4.00)
	Heating	kW	1.55 (0.68-2.70)	2.58 (0.98-4.55)	3.27 (1.00-4.00)
Current	Cooling/Heating	A	6.96/6.88	11.05/11.45	15.40/14.15
EER/COP		W/W	3.23/3.61	3.22/3.60	3.20/3.70
Maximum Indoor unit connection quantity		set	2	4	5
Sound pressure level		dB(A)	56	58	61
Compressor type		-	Inverter Rotary		
Fuse current		A	25	30	30
Circuit breaker current		A	20	25	25
Dimension (WxDxH)	Outline	mm	955x396x700	980x427x790	1087x440x1103
	Package	mm	1029x458x750	1083x448x855	1173x483x1130
Net weight/Gross weight		kg	50/55	69/74	90/98
Refrigerant charge volume		kg	1.60	2.30	3.65
Outdoor unit operation range	Cooling	°C	-5-48	-5-48	-5-48
	Heating	°C	-15-24	-15-24	-15-24
Connection pipe	Precharged length	m	10	40	40
	Outer diameter liquid pipe	mm	φ6.35x2	φ6.35x4	φ6.35x5
	Outer diameter gas pipe	mm	φ9.52x2	φ9.52x4	φ9.52x5
	Max allowable length	m	20	70	75
	Max outdoor to single indoor length	m	10	20	25
	Max height distance (ind to ind)	m	5	5	7.5
	Max height distance (out to ind)	m	5	10	15

Remarks:

1. Because of the continuing improvement on product, all specification are subject to change without prior notice.
2. Above outdoor units specification is according to a fixed combination with Lomo indoor Series which comply with AS/NZS 3823
3. Above outdoor units are standard with DRED mode (Demand Response Enabling Device) which comply with AS/NZS 4755.

Indoor Units

Capacity Index (BTU/h)		7000	9000	12000	18000	21000	24000
Wall Mounted	Lomo	●	●	●	●	●	●
Duct type			●	●	●	●	●
Compact Cassette				●	●		
Cassette							●
Floor Ceiling					●		

Lomo

Model		Unit	GWH07QC -K3DNB2A	GWH09QC -K3DNB2A	GWH12QC -K3DNB2D	GWH18QD -K3DNB2D	GWH21QE -K3DNB2H	GWH24QE -K3DNB2H
Capacity	Cooling/Heating	kW	2.1/2.7	2.5/3.0	3.4/4.0	5.3/5.6	6.2/7.1	7.1/8.0
Air Flow Volume		l/s	175	175	189	250	375	389
Sound Pressure Level		dB(A)	23-40	22-40	26-44	26-48	30-50	35-51
Dehumidity Volume		l/hr	0.8	0.8	1.4	1.8	2	2.5
Dimension (WxDxH)	Outline	mm	845x209x289	845x209x289	845x209x289	970x224x300	1078x246x325	1078x246x325
	Package	mm	921x281x379	921x281x379	921x281x379	1041x383x320	1178x413x350	1148x413x350
Net weight/Gross weight		kg	10.0/12.0	10.0/12.0	10.5/12.5	13.5/16.5	15.5/19	16/19.5
Connecting pipe Outer Diameter	Liquid Pipe	mm	6.35	6.35	6.35	6.35	6.35	6.35
	Gas Pipe	mm	9.52	9.52	9.52	12.7	12.7	15.88

Slim Ducted (Built-in water pump)

Model		Unit	GFH09EA -K3DNA1A/I	GFH12EA -K3DNA1A/I	GFH18EA -K3DNA1A/I	GFH21EA -K3DNA1A/I	GFH24EA -K3DNA1A/I
Capacity	Cooling/Heating	kW	2.50/2.80	3.50/3.80	4.50/5.50	6.00/6.60	7.00/8.00
Air Flow Volume		l/s	125	153	194	278	278
External Static Pressure		Pa	0~10	0~10	0~10	0~15	0~15
Sound Pressure Level		dB(A)	37/34/31	39/35/32	41/37/33	42/38/34	42/38/34
Dehumidity Volume		l/hr	0.8	1.4	1.8	2	2.5
Dimension (WxDxH)	Outline	mm	700x615x200	700x615x200	900x615x200	1100x615x200	1100x615x200
	Package	mm	898x743x305	898x743x305	1123x743x305	1323x743x305	1323x743x305
Net weight/Gross weight		kg	22/27	23/29	27/36	31/41	31/41
Connecting pipe Outer Diameter	Liquid Pipe	mm	φ6.35	φ6.35	φ6.35	φ9.52	φ9.52
	Gas Pipe	mm	φ9.52	φ9.52	φ12.7	φ15.9	φ15.9

Mini Floor Mount

Model		Unit	GEH18-K3DNA1D/I
Capacity	Cooling/Heating	kW	5.2/5.3
Air Flow Volume		l/s	194
Sound Pressure Level		dB(A)	31-47
Dehumidity Volume		l/hr	1.8
Dimension (WxDxH)	Outline	mm	700x600x215
	Package	mm	785x682x280
Net weight/Gross weight		kg	15.5/18.5
Connecting pipe Outer Diameter	Liquid Pipe	mm	φ6.35
	Gas Pipe	mm	φ12.7

Compact Cassette / Cassette

Model		Unit	Compact Cassette		Cassette
			GKH12BA-K3DNA2A/I	GKH18BA-K3DNA2A/I	GKH24BA-K3DNA1A/I
Capacity	Cooling/Heating	kW	3.50/4.00	4.50/5.00	7.10/8.00
Air Flow Volume		l/s	167	167	328
Sound Pressure Level		dB(A)	46/44/42	46/44/42	39/37/35
Dehumidity Volume		l/hr	1.4	1.8	2.5
Dimension (WxDxH)	Outline	mm	570x570x230	570x570x230	840x840x240
	Package	mm	851x731x325	851x731x325	963x963x325
Net weight/Gross weight		kg	18/23	18/23	28/35
Panel Dimension (WxDxH)	Outline	mm	650x650x60	650x650x60	950x950x60
	Package	mm	733x673x117	733x673x117	1043x1028x130
Panel Net weight/Gross weight		kg	18/23	18/23	28/35
Connecting pipe Outer Diameter	Liquid Pipe	mm	φ6.35	φ6.35	φ9.52
	Gas Pipe	mm	φ9.52	φ12.7	φ15.9

Optional Wall Controller

Item	Nominal Operating Conditions				
	Outdoor Conditions		Indoor Conditions		Outdoor Conditions
	DB (°C)	WB (°C)	DB (°C)	WB (°C)	DB (°C)
Cooling	35	24	27	19	-15~43
Heating	7	6	20	15	-15~24

Combinations

Model	Two Indoor Units	
GWHD(18)NK3JO	07 + 07	09 + 09
	07 + 09	09 + 12
	07 + 12	12 + 12

Model	Two Indoor Units		Three Indoor Units		Four Indoor Units	
GWHD(28)NK3JO	07 + 09	09 + 12	07 + 07 + 07	07 + 12 + 18	07 + 07 + 07 + 07	07 + 07 + 09 + 12
	07 + 12	09 + 18	07 + 07 + 09	09 + 09 + 09	07 + 07 + 07 + 09	07 + 07 + 12 + 12
	07 + 18	12 + 12	07 + 07 + 12	09 + 09 + 12	07 + 07 + 07 + 12	07 + 09 + 09 + 09
	09 + 09	12 + 18	07 + 07 + 18	09 + 09 + 18	07 + 07 + 07 + 18	07 + 09 + 09 + 12
		18 + 18	07 + 09 + 09	09 + 12 + 12	07 + 07 + 09 + 09	07 + 09 + 12 + 12
			07 + 09 + 12	09 + 12 + 18	07 + 07 + 09 + 12	09 + 09 + 09 + 09
			07 + 09 + 18	12 + 12 + 12	07 + 07 + 09 + 18	09 + 09 + 09 + 12
			07 + 12 + 12	12 + 12 + 18		09 + 09 + 12 + 12

Indoor Unit Selection

Note

Indoor unit selection is based on a minimum of 50% to a maximum of 150% of the outdoor units capacity.

If synchronous operation is required then we recommend a capacity ceiling of 100%.

21k or above indoor units are not recommended for use with either the 18k or 28k outdoor units.

Combinations

Model	Two Indoor Units		Three Indoor Units		Four Indoor Units		Five Indoors	
GWHD(42)NK3JO	07 + 18	12 + 18	07 + 07 + 09	09 + 12 + 21	07 + 07 + 07 + 07	07 + 12 + 18 + 18	07 + 07 + 07 + 07 + 07	07 + 07 + 12 + 12 + 12
	07 + 21	12 + 21	07 + 07 + 12	09 + 12 + 24	07 + 07 + 07 + 09	07 + 12 + 18 + 21	07 + 07 + 07 + 07 + 09	07 + 07 + 12 + 12 + 18
	07 + 24	12 + 24	07 + 07 + 18	09 + 18 + 18	07 + 07 + 07 + 12	07 + 12 + 18 + 24	07 + 07 + 07 + 07 + 12	07 + 07 + 12 + 12 + 21
	09 + 12	18 + 18	07 + 07 + 21	09 + 18 + 21	07 + 07 + 07 + 18	07 + 12 + 21 + 21	07 + 07 + 07 + 07 + 18	07 + 07 + 12 + 12 + 24
	09 + 18	18 + 21	07 + 07 + 24	09 + 18 + 24	07 + 07 + 07 + 21	07 + 18 + 18 + 18	07 + 07 + 07 + 07 + 21	07 + 07 + 12 + 18 + 18
	09 + 21	18 + 24	07 + 09 + 09	09 + 21 + 21	07 + 07 + 07 + 24	09 + 09 + 09 + 09	07 + 07 + 07 + 07 + 24	09 + 09 + 09 + 09 + 09
	09 + 24	21 + 21	07 + 09 + 12	09 + 21 + 24	07 + 07 + 09 + 09	09 + 09 + 09 + 12	07 + 07 + 07 + 09 + 09	09 + 09 + 09 + 09 + 12
	12 + 12	21 + 24	07 + 09 + 18	12 + 12 + 12	07 + 07 + 09 + 12	09 + 09 + 09 + 18	07 + 07 + 07 + 09 + 12	09 + 09 + 09 + 09 + 18
		24 + 24	07 + 09 + 21	12 + 12 + 18	07 + 07 + 09 + 18	09 + 09 + 09 + 21	07 + 07 + 07 + 09 + 18	09 + 09 + 09 + 09 + 21
			07 + 09 + 24	12 + 12 + 21	07 + 07 + 09 + 21	09 + 09 + 09 + 24	07 + 07 + 07 + 09 + 21	09 + 09 + 09 + 09 + 24
			07 + 12 + 12	12 + 12 + 24	07 + 07 + 09 + 24	09 + 09 + 12 + 12	07 + 07 + 07 + 09 + 24	09 + 09 + 09 + 12 + 12
			07 + 12 + 18	12 + 18 + 18	07 + 07 + 12 + 12	09 + 09 + 12 + 18	07 + 07 + 09 + 09 + 09	09 + 09 + 09 + 12 + 18
			07 + 12 + 21	12 + 18 + 21	07 + 07 + 12 + 18	09 + 09 + 12 + 21	07 + 07 + 09 + 09 + 12	09 + 09 + 09 + 12 + 21
			07 + 12 + 24	12 + 18 + 24	07 + 07 + 12 + 21	09 + 09 + 12 + 24	07 + 07 + 09 + 09 + 18	09 + 09 + 09 + 12 + 24
			07 + 18 + 18	18 + 18 + 18	07 + 07 + 12 + 24	09 + 09 + 18 + 18	07 + 07 + 09 + 09 + 21	09 + 09 + 09 + 18 + 18
			07 + 18 + 21	18 + 18 + 21	07 + 07 + 18 + 18	09 + 09 + 18 + 21	07 + 07 + 09 + 09 + 24	09 + 09 + 12 + 12 + 12
			07 + 18 + 24	18 + 18 + 24	07 + 07 + 18 + 21	09 + 09 + 18 + 24	07 + 07 + 09 + 12 + 12	09 + 09 + 12 + 12 + 18
			07 + 21 + 21	18 + 21 + 21	07 + 07 + 18 + 24	09 + 09 + 21 + 21	07 + 07 + 09 + 12 + 18	09 + 09 + 12 + 12 + 21
			07 + 21 + 24	18 + 21 + 24	07 + 09 + 09 + 09	09 + 09 + 21 + 24	07 + 07 + 09 + 12 + 21	09 + 12 + 12 + 12 + 12
			09 + 09 + 09	21 + 21 + 21	07 + 09 + 09 + 12	09 + 12 + 12 + 12	07 + 07 + 09 + 12 + 24	09 + 12 + 12 + 12 + 18
			09 + 09 + 12		07 + 09 + 09 + 18	09 + 12 + 12 + 18		
			09 + 09 + 18		07 + 09 + 09 + 21	09 + 12 + 12 + 21		
			09 + 09 + 21		07 + 09 + 09 + 24	09 + 12 + 12 + 24		
			09 + 09 + 24		07 + 09 + 12 + 12	09 + 12 + 18 + 18		
			09 + 12 + 12		07 + 09 + 12 + 18	09 + 12 + 18 + 21		
			09 + 12 + 18		07 + 09 + 12 + 21	09 + 12 + 18 + 24		
					07 + 09 + 12 + 24	09 + 12 + 21 + 21		
					07 + 09 + 18 + 18	09 + 18 + 18 + 18		
					07 + 09 + 18 + 21	12 + 12 + 12 + 12		
					07 + 09 + 18 + 24	12 + 12 + 12 + 18		
					07 + 12 + 12 + 12	12 + 12 + 12 + 21		
					07 + 12 + 12 + 18	12 + 12 + 12 + 24		
				07 + 12 + 12 + 21	12 + 12 + 18 + 18			
				07 + 12 + 12 + 24	12 + 12 + 18 + 21			



For Installation and Sales:

For Parts and Warranty:



www.greeac.com.au

1800 GREE 4 ME
1800 4733 4 63