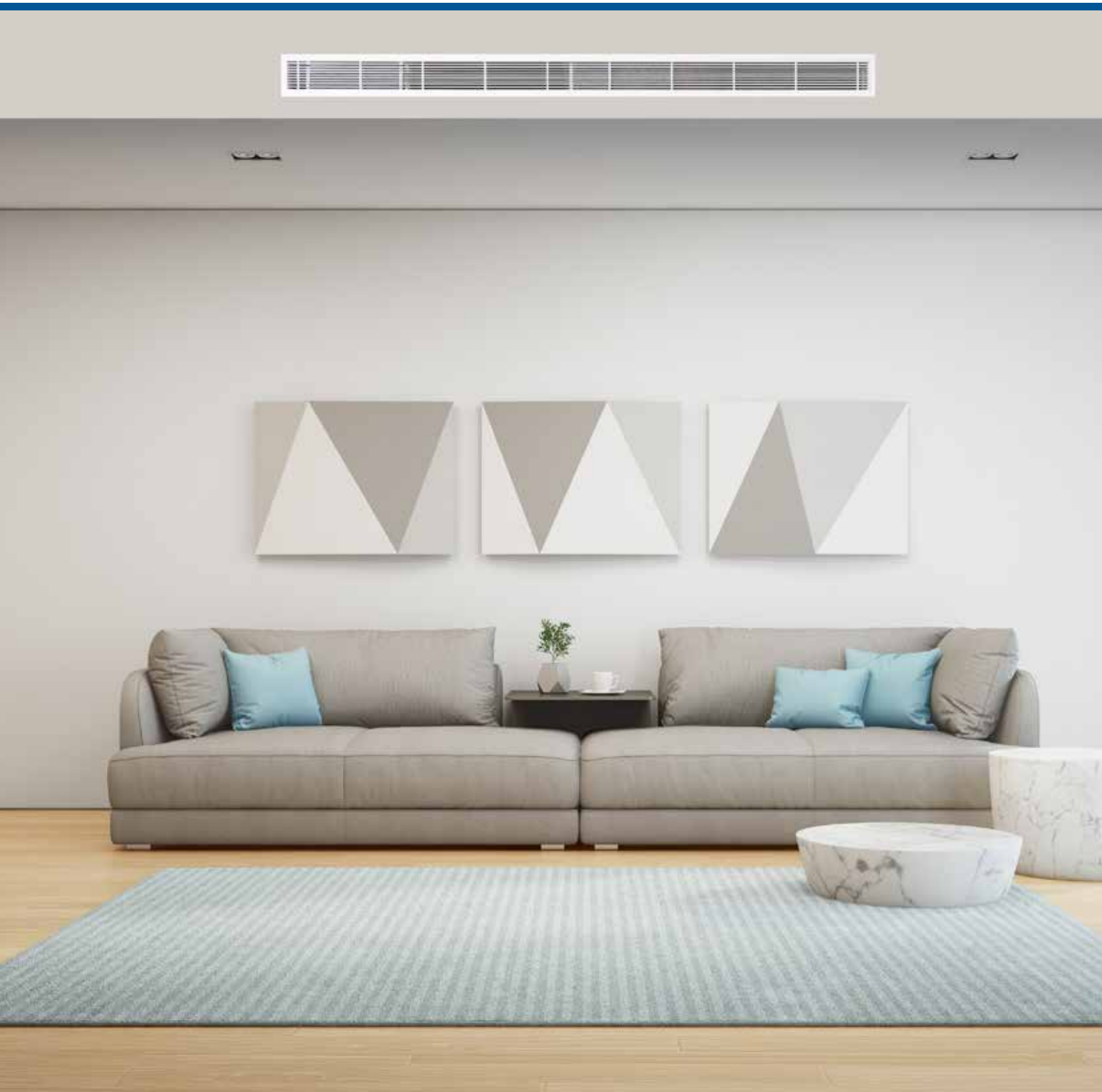


RESIDENTIAL AIR CONDITIONING SOLUTIONS



Watch the TECO Corporate video

***The strength of a global brand. Comfort you can rely on.***



## ENGINEERED TO PERFORM

For over 60 years we have delivered market leading electrical motors worldwide. Powering the largest machines in ships, mines, quarries, plants & refineries. Our strength is diversification with expertise in state of the art products and services across telecommunications, IT solutions, automation, wind turbines, electric vehicles and home appliances.

## THE QUIET ACHIEVER

In Australia, we are the market leader in industrial motors and have been for over 30 years. This has paved the way for our success in home appliances - air conditioners, fridges, freezers, washing machines and clothes dryers. We supply to many mine sites and commercial businesses in the harshest places from the Pilbara to Kalgoorlie to Papua New Guinea. Our designs, functionality and performance are backed by our in-home dedicated service network.

## QUALITY & RELIABILITY

Our heavy industrial expertise nurtures our commitment to quality and reliability in all our products. Whether it is an air conditioner for a small room or a ducted system to cool or heat your entire home - TECO has you covered with the strength of our global brand and comfort you can rely on.



**\$3Billion USD Net Worth**



**40,000+ Employees**



**36 Countries Worldwide**  
 • sales / marketing • production



*TECO Ducted Systems, the comfortable choice for residential or light commercial premises.*

### Nationwide Service Network

Australian based nationwide service network means we're never far away. Service and spare parts, we're here to help.

**TECO recommend annual servicing of your ducted system to protect your investment. Dirt and debris can build up over time, impacting efficiency and performance, if not maintained.**

### Energy Efficient

The HVDM range by TECO has been designed to perform and are tested and compliant with the latest Minimum Energy Performance Standards.

### Free Professional Advice

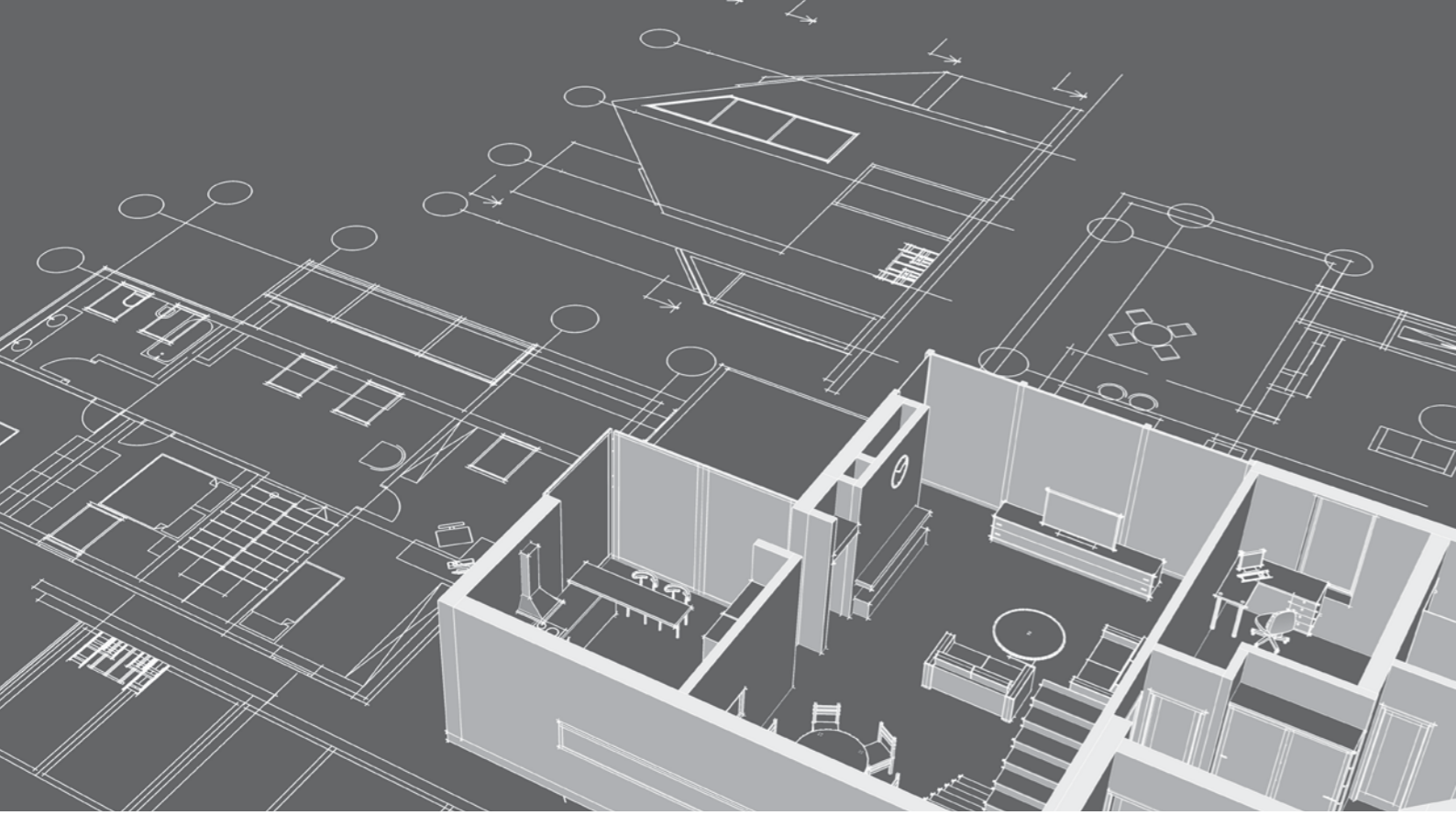
TECO specialist dealers will provide custom designed solutions for your premises to suit your needs through a free in home quotation.



*The strength of a global brand. Comfort you can rely on.*



# Functionality



## Engineered to perform

### Indoor Unit

The indoor unit has a fan coil which conditions the supplied air, this conditioned air is then distributed through ducting in the roof to outlets in ceiling or walls.



### Outdoor Unit

Enjoy comfort with TECO outdoor units tested and built to last. Reliable, even in the harsh Australian environment.



#### Reverse Cycle

Summer or winter, heating or cooling - keep your indoor temperature at a comfortable level.



#### Built-in Drain Pump

Built-in drain pump can lift the water up to 750mm height, which widens the drainage piping range.



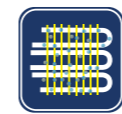
#### Brushless DC Inverter Motor

Having a brushless DC inverter motor in both indoor & outdoor units, minimises energy consumption, ensures a long service life and quickly distributes conditioned air.



#### Efficient & Compliant

All TECO Ducted Air Conditioners are compliant with the Australian Government's Minimum Energy Performance Standards (MEPS). Each unit is designed for energy efficiency. Helping reduce running costs without compromising comfort.



#### Gold Fin Protection

Gold fin protection provides peace of mind as it prolongs the life of the aluminum outdoor condenser fins, by preventing the accumulation of harmful corrosive acids, salts and air borne contaminants, thereby prolonging the performance and lifespan of your Ducted Air Conditioner.



#### Broad Operating Range

In the peak of an Australian summer or the depths of a freezing winter, feel confident your TECO ducted air conditioner has been tested to perform efficiently to keep your home comfortable all year round.



#### Service Friendly Design

Engineered to be simple to install and maintain. Designed to be concealed and out of the way. The return air grille, filter and outlets giving comfort while minimising visibility.



#### D.R.E.D Enabled

Demand Response Enabling Device, ensures you can sign up to state based peak demand management programs. Contact your energy retailer for more information around peak demand management of your air conditioner.



# CONTROL YOUR COMFORT



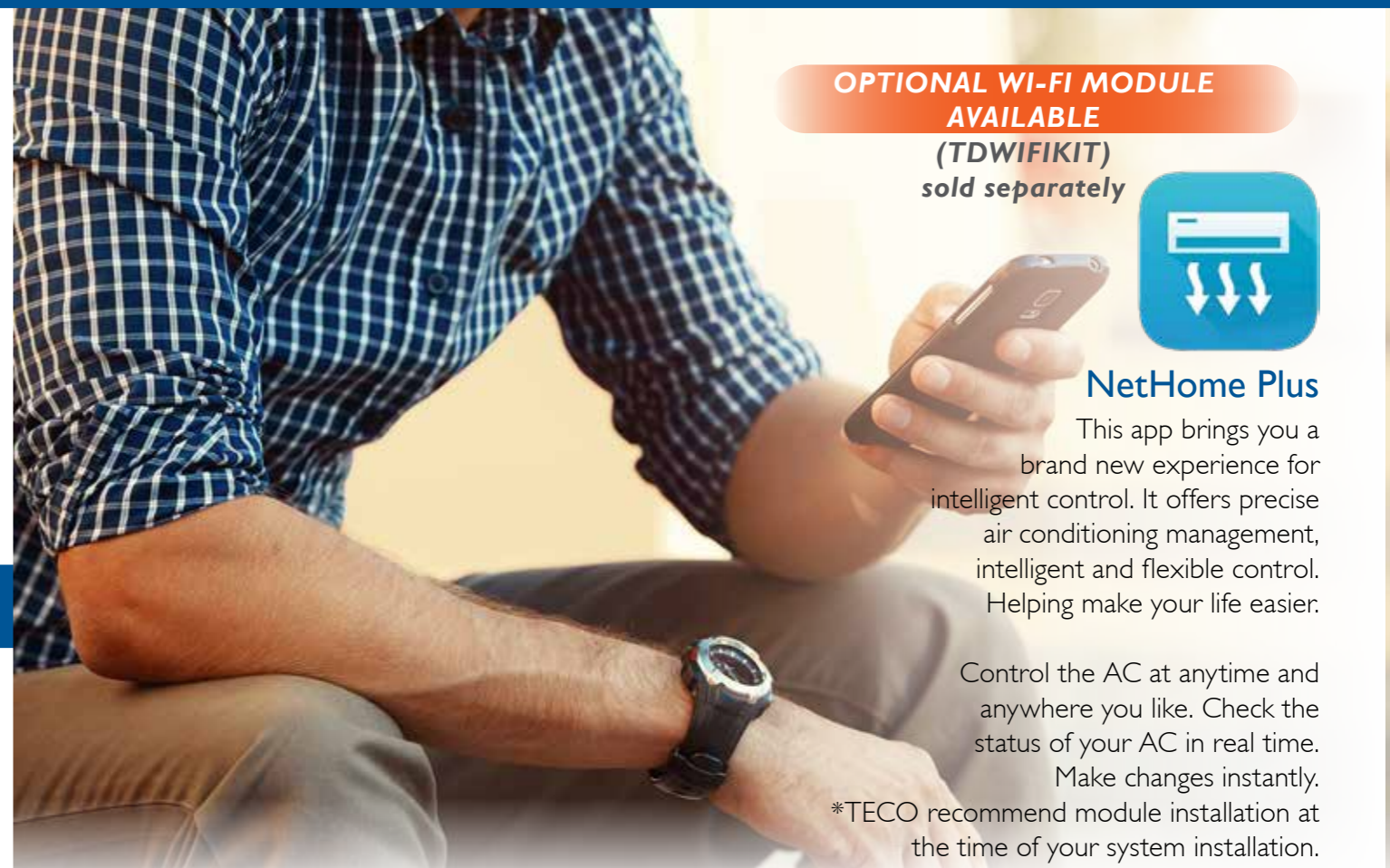
**Wired Controller**  
(WALLCONKJR120C)

**For your family and your home**  
The wall controller gives you the simplicity and control of your home. Comfort is at your fingertips.

- Modes: auto, cool, dry, fan, heat
- Fan: auto, low, medium low, medium, medium high, high speed, Turbo
- Sleep function
- Health function
- Memory function
- Energy-saving function
- Defrosting function
- Filter clean remind
- Timer (Daily or Weekly)
- Quiet function
- Lock function
- Error code display
- Switch between Fahrenheit and Centigrade

Additional 2nd wired controller available as an optional extra (WALLCONKJR12B).

# WIRELESS CONNECTIVITY



**OPTIONAL WI-FI MODULE AVAILABLE**  
(TDWIFIKIT)  
sold separately



## NetHome Plus

This app brings you a brand new experience for intelligent control. It offers precise air conditioning management, intelligent and flexible control. Helping make your life easier.

Control the AC at anytime and anywhere you like. Check the status of your AC in real time. Make changes instantly.

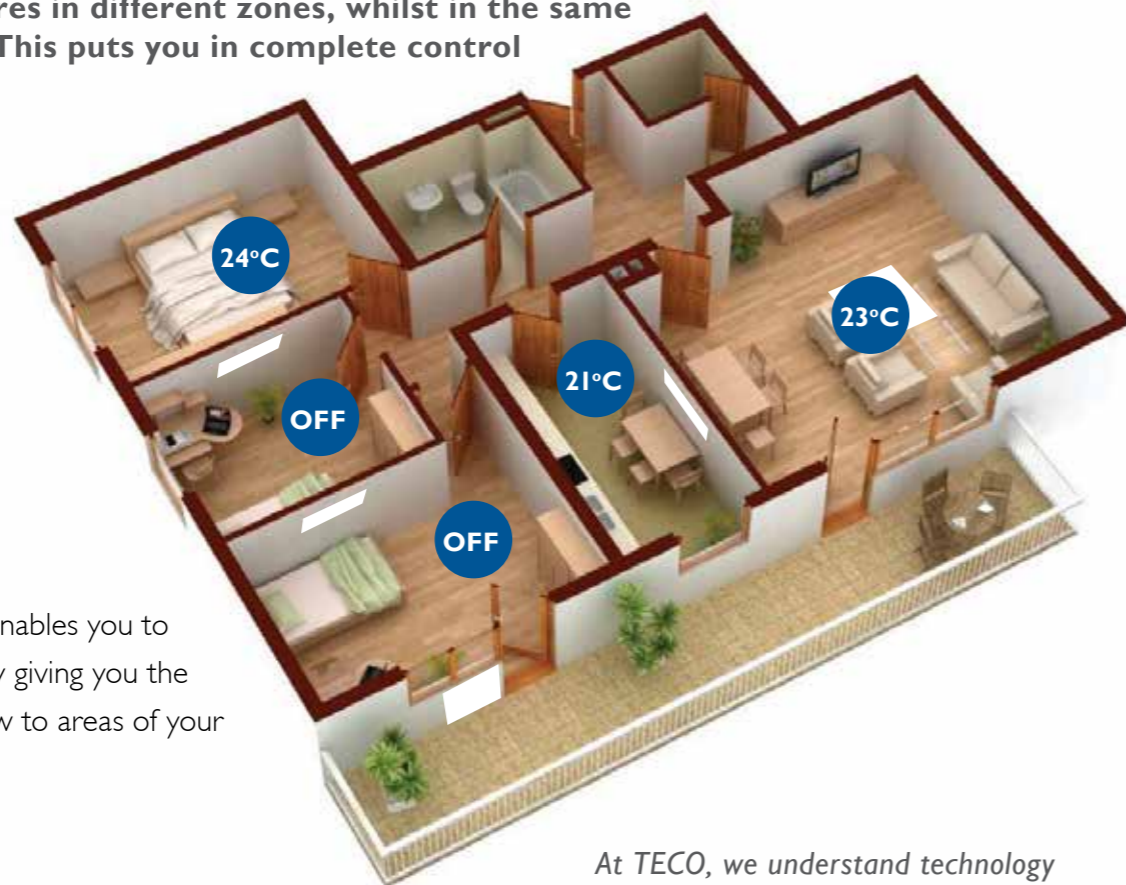
\*TECO recommend module installation at the time of your system installation.

**Total control from your mobile device. Set your system from anywhere!**

# ZONE UPGRADE OPTION

## Create Your Own Comfort

Zone controls are the simplest way to control your TECO ducted system to suit your lifestyle needs. We understand that you or your family may want different temperatures in different zones, whilst in the same mode of operation. This puts you in complete control of your comfort.



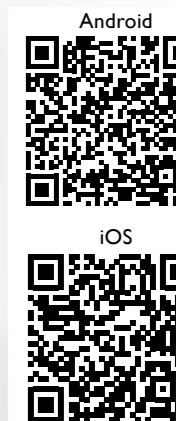
## Take Control

Adding a zone control enables you to manage running costs by giving you the option to turn off airflow to areas of your home not in use.

*At TECO, we understand technology and integration is changing rapidly and this is why we ensure compatibility with most 3rd party control systems available. Please check with your TECO specialist dealer for options available to you.*



**\*Internet connection and compatible smartphone required (not included).**





# SPECIFICATIONS

HIGH STATIC DUCTED SYSTEMS						
Model Number - System			TDS-TSO105HVDM	TDS-TSO130HVDM	TDS-TSO145HVDM	TDS-TSO170HVDM
Model Number - Indoor			TDSI05HVDM	TDSI30HVDM	TDSI45HVDM	TDSI70HVDM
Model Number - Outdoor			TSO105HVDM	TSO130HVDM	TSO145HVDM	TSO170HVDM
Power Supply (Indoor & Outdoor)	Voltage - Phase - Hz		220-240 - 1 - 50			
Cooling	Capacity (MEPS)	kW	10.50 (4.2-12.5)	13.00 (5.00-15.50)	14.50 (5.60-16.50)	17.00 (6.80-19.50)
	Power Input	kW	3.18 (1.25~3.80)	3.785 (1.15~4.55)	4.25 (1.29~4.25)	5.155 (1.56~5.95)
	EER	kW	3.30	3.43	3.41	3.3
	Running Current	A	14.55	17.50	19.50	23.70
Heating	Capacity (MEPS)	kW	10.50 (4.20~12.50)	15.00 (5.00~19.00)	17.00 (5.80~20.00)	17.50 (7.00~21.00)
	Power Input	kW	3.18 (1.25~3.80)	3.90 (1.50~5.70)	4.50 (1.70~6.20)	4.60 (2.05~6.25)
	COP		3.30	3.85	3.78	3.80
	Running Current	A	14.70	18.00	20.50	23.70
Rated Current (Max.)		A	21	26	26	30
Air Flow (Hi / Med / Low) @ 150Pa		L/Sec	725 / 644 / 500	1085 / 924 / 715	1085 / 924 / 715	1100 / 835 / 784
External Static Pressure Range (SPI ~ SP4)		Pa	0 - 200			
Indoor Sound Pressure Level (Hi / Med / Low)		dB(A)	40 / 37 / 35	49 / 46 / 42	49 / 45 / 42	49 / 46 / 42
Indoor Unit	Dimensions	mm (HxWxD)	380 x 1200 x 625	380 x 1200 x 625	380 x 1200 x 625	440 x 1400 x 858
	Net Weight	Kg	53	54	56	74
	Gross Weight	Kg	61	63	64	86
Indoor Flange Size	Supply Air (WxH)	mm	1000 x 253	1000 x 253	1000 x 253	1188 x 385
	Return Air (WxH)	mm	1145 x 334	1145 x 334	1145 x 334	1188 x 385
Outdoor Unit	Dimensions (HxWxD)	mm	810 x 946 x 410	1333 x 952 x 415	1333 x 952 x 415	1333 x 952 x 415
	Net Weight	Kg	69	100	112	112
	Gross Weight	Kg	76	114	126	126
Outdoor Sound Pressure Level		dB(A)	61	62	62	62
Outdoor Sound Power Level		dB(A)	70	71	71	71
Compressor			Twin Rotary			
Refrigerant Type			R410A			
Factory Pre-Charge Length		m	20	20	20	20
Refrigerant Piping	Liquid / Gas	mm / inch	9.52 / 15.88 (3/8" / 5/8")	9.52 / 15.88 (3/8" / 5/8")	9.52 / 15.88 (3/8" / 5/8")	9.52 / 19.00 (3/8" / 3/4")
Maximum Piping Distance	Height / Length	m	30 / 65	30 / 65	30 / 65	30 / 65
Controller Type			Wired			
Indoor Operation Range (Cooling / Heating)		°C	17 ~ 32 / 0 ~ 30			
Ambient Temperature Range (Cooling / Heating)		°C	-15 ~ 50 / -15 ~ 24			

**Please note:** The following information is relevant to all data contained in this brochure.

- Running Current is at rated conditions (AS/NZS 3823) and does not include compressor start-up or variations in power supply and load conditions. Ducted air conditioners should only be installed by a person licensed to handle refrigerants. Failure to comply with relevant government regulations may void warranty.
- Indoor unit sound levels are determined in an anechoic chamber at a distance of 1 metre from the front of the unit. They may be slightly higher during actual operation due to ambient conditions.

- Due to continuous product improvements, specifications are subject to change without prior notice.
- Ducted Air Conditioners should only be installed by a person adequately licensed by ARC to install Air Conditioners.
- Licensed installers must comply with relevant government regulations to safeguard your warranty.
- Please refer to the warranty conditions on our website for commercial and domestic products - <http://www.teco.com.au/assets/warranty>

\*\* Energy rating based on AS/NZS 3823

Cooling Indoor temperature 27°C DB / 19°C WB  
Outdoor temperature 35°C DB / 24°C WB

Heating Indoor temperature 20°C DB / 15°C WB  
Outdoor temperature 7°C DB / 6°C WB

Cooling & Heating Capacities based on AS/NZS 3823



# TECO

*The Comfortable Choice*

## TECO Reverse Cycle

Ducted Systems are designed to suit every Australian lifestyle - no matter the climate outside.

Whether you need heating or cooling, be in control of your climate all year round with TECO.

# COOLING



That's comfort. That's TECO.

## LOW PROFILE OPTIONS

Ideal for residential projects where the application calls for a low profile indoor unit, situated in a bulkhead or above cabinetry. Available upon request for your next project. Be sure to schedule with your contractor well in advance as Low Profile models are ordered to meet project requirements. Lead times apply.



**LOW PROFILE INDOOR UNIT**  
7.0 kW TDS70HVL PDM  
10.0 kW TDS100HVL PDM



**OUTDOOR UNIT**  
7.0 kW TSO70HVL PDM  
10.0 kW TSO100HVL PDM

### LOW PROFILE DUCTED SYSTEMS SPECIFICATIONS

Model Number - System		TDS-TSO70HVL PDM	TDS-TSO100HVL PDM
Model Number - Indoor		TDS70HVL PDM	TDS 100HVL PDM
Model Number - Outdoor		TSO70HVL PDM	TSO100HVL PDM
Power Supply (Indoor & Outdoor)	Voltage - Phase - Hz	220-240 - 1 - 50	
Cooling Capacity (MEPS)	kW	7.00	10.00
Cooling Capacity Range	kW	2.80-8.40	4.00-12.00
Heating Capacity (MEPS)	kW	8.00	10.50
Heating Capacity Range	kW	3.00-9.00	4.20-12.50
Running Current (Cooling/Heating)	A	9.70 / 11.00	13.90 / 14.70
Rated Current (Max.)	A	16	16
EER		3.30	3.28
COP		3.33	3.30
Air Flow (Hi / Med / Low) @ 120Pa	L/Sec	403 / 341 / 230	598 / 500 / 416
External Static Pressure Range (SPI ~ SP4)	Pa	0 - 160	0 - 160
Indoor Sound Pressure Level (Hi / Med / Low)	dB(A)	45 / 41 / 38	49 / 46 / 42
Indoor Unit	Dimensions (HxWxD)	mm	248 x 1100 x 720
	Net Weight	Kg	31
	Gross Weight	Kg	38
Outdoor Unit	Dimensions (HxWxD)	mm	810 x 946 x 410
	Net Weight	Kg	61
	Gross Weight	Kg	66.5
Refrigerant Type		R410A	
Factory Pre-Charge Length		m	20



# TECO

*The Comfortable Choice*

The strength of a global brand, comfort you can rely on.



TAC-DAC-TE-03.21  
E&OE



Watch the  
TECO video



## 1300 660 037

[sales@teco.com.au](mailto:sales@teco.com.au) | [www.teco.com.au](http://www.teco.com.au)

TECO AUSTRALIA PTY. LTD.  
[www.teco.com.au](http://www.teco.com.au)

Sydney  
335-337 Woodpark Road,  
Smithfield, NSW 2164  
Tel: +61 2 9765 8118  
Fax: +61 2 9765 8185

Melbourne  
16 Longstaff Road,  
Baywater VIC 3153  
Tel: +61 3 9720 4411  
Fax: +61 3 9720 5355

Brisbane  
50 Murdoch Circuit,  
Acacia Ridge QLD 4110  
Tel: +61 7 3373 9600  
Fax: +61 7 3373 9699

Perth  
18 Hazelhurst Street,  
Kewdale WA 6105  
Tel: +61 8 9479 4879  
Fax: +61 8 9478 3876



Quality  
Endorsed  
Company  
AS/NZS ISO 9001:2004  
QEC 11488